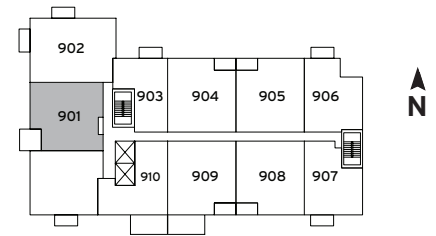




## PLAN S - 2 BEDROOM - 1155 SqFt + 525 SqFt Outdoor Living Space

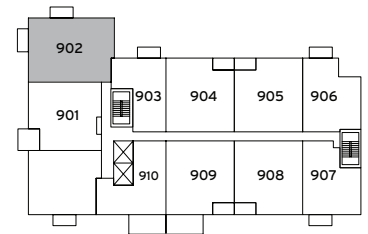
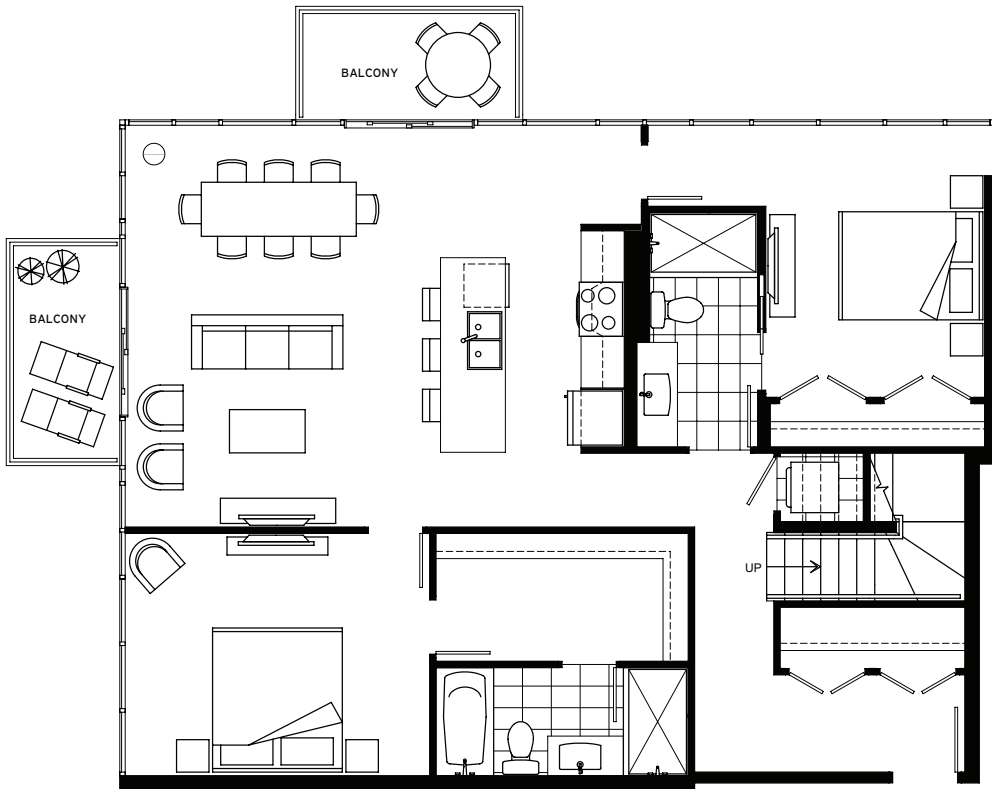
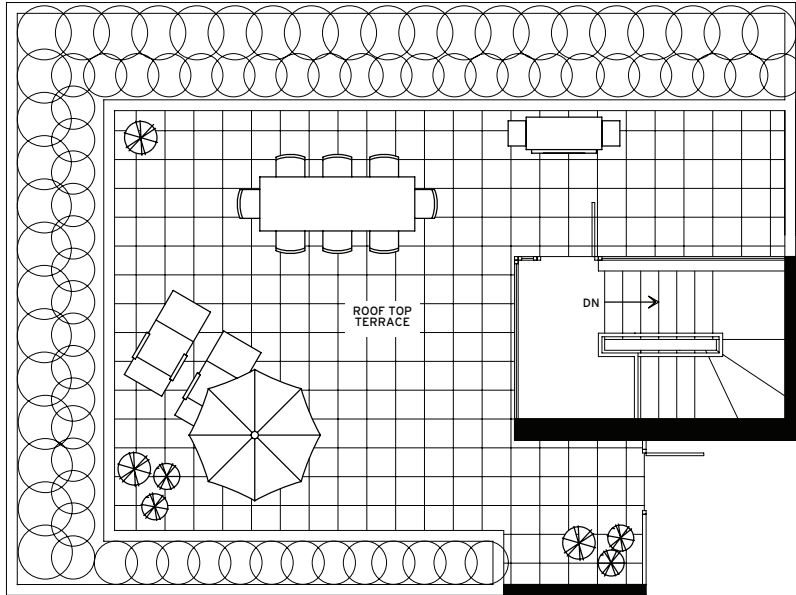


9th Floor

Dimensions, square footage and floor plans are approximate only. Final dimensions, square footage and floor plans may vary and will be determined by final strata plan measurements. Final floor plans may be a mirror image of the floor plans shown above. The Developer reserves the right to make changes to the floor plans, project design, appliances, specification and features. E.&O.E.



## PLAN T - 2 BEDROOM - 1335 SqFt + 540 SqFt Outdoor Living Space

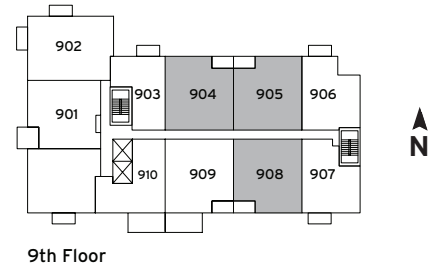
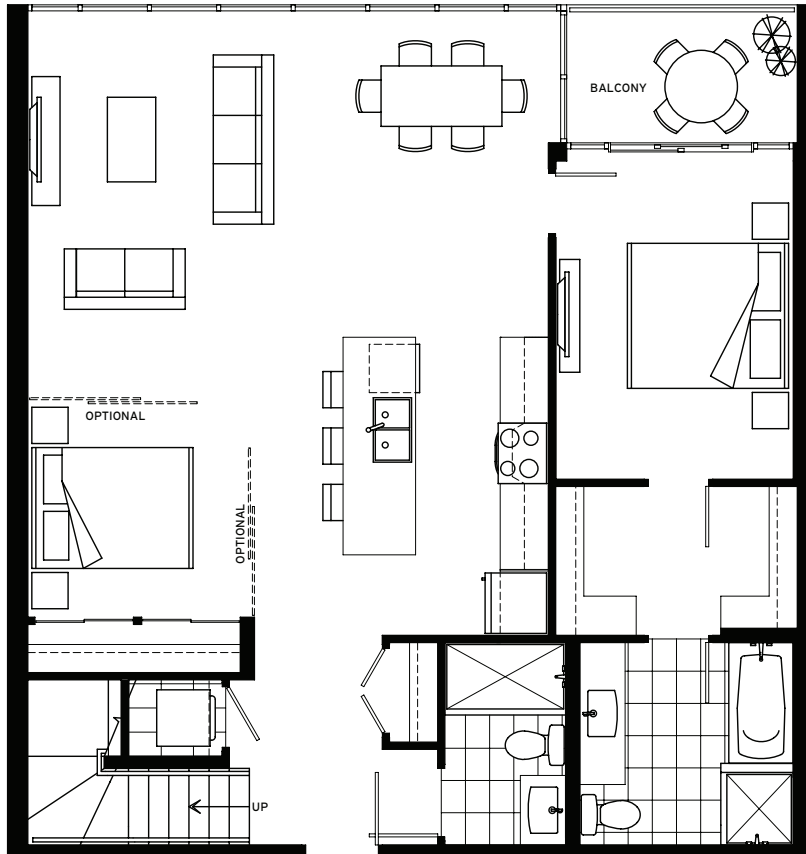
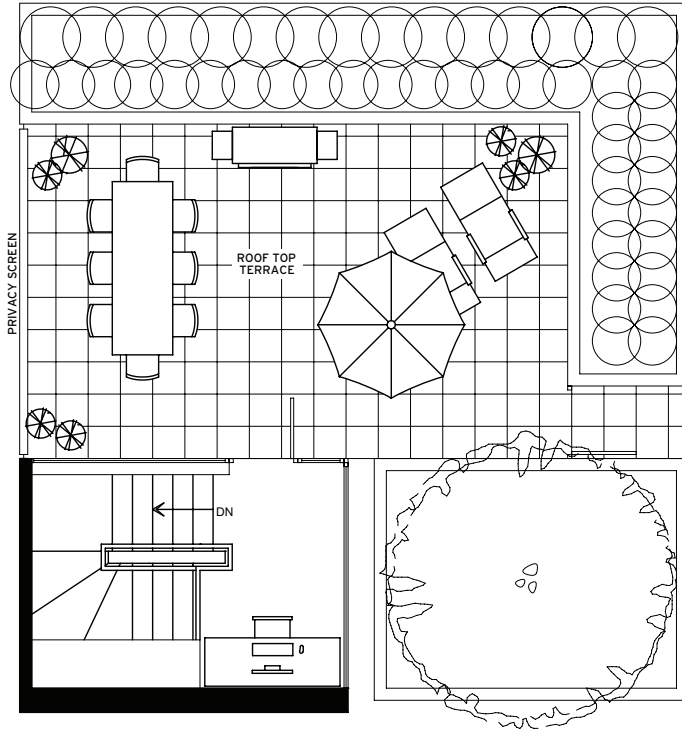


Dimensions, square footage and floor plans are approximate only. Final dimensions, square footage and floor plans may vary and will be determined by final strata plan measurements. Final floor plans may be a mirror image of the floor plans shown above. The Developer reserves the right to make changes to the floor plans, project design, appliances, specification and features. E.&O.E.

# V6A



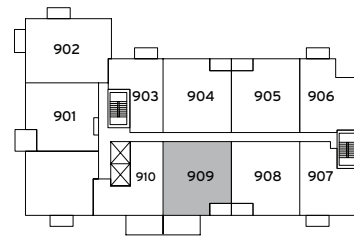
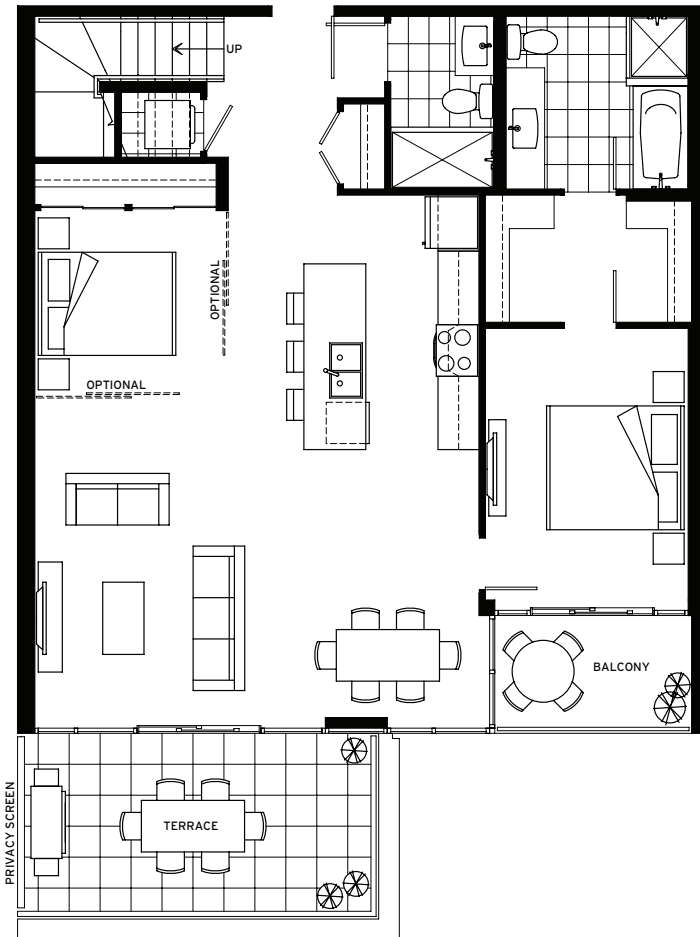
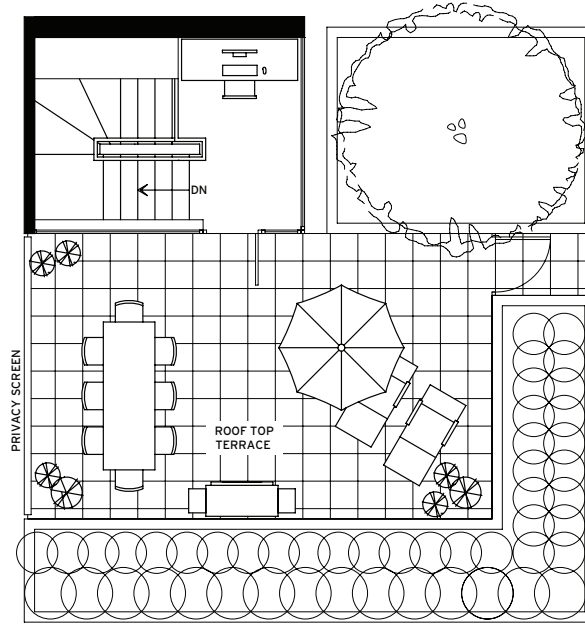
## PLAN V – 2 BEDROOM – 1190 SqFt + 350 SqFt Outdoor Living Space



Dimensions, square footage and floor plans are approximate only. Final dimensions, square footage and floor plans may vary and will be determined by final strata plan measurements. Final floor plans may be a mirror image of the floor plans shown above. The Developer reserves the right to make changes to the floor plans, project design, appliances, specification and features. E.&O.E.



## PLAN V1 – 2 BEDROOM – 1190 SqFt + 500 SqFt Outdoor Living Space



9th Floor



Dimensions, square footage and floor plans are approximate only. Final dimensions, square footage and floor plans may vary and will be determined by final strata plan measurements. Final floor plans may be a mirror image of the floor plans shown above. The Developer reserves the right to make changes to the floor plans, project design, appliances, specification and features. E.&O.E.